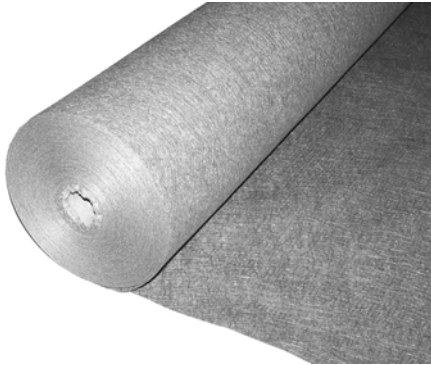


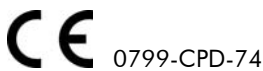
# Product Data Sheet

## Filter Sheet SF

Order No. 2100–2102



Geotextile of thermally strengthened polypropylene, applicable as filter sheet above drainage elements for normal mechanical stress.



### Technical Data

#### Filter Sheet SF

Thermally strengthened filter sheet of Polypropylene.

Thickness:	ca. 0.60 mm	
Weight:	ca. 100 g/m <sup>2</sup>	
Colour:	grey	
Penetration force according to EN ISO 12236:	ca. 1100 N	
Strength class:	2	
Tensile strength (200 mm) according to EN ISO 10319:	ca. 7.0 kN/m	
Tensile extension lengthwise/crosswise:	ca. 40% / 55%	
Flow rate (H <sub>50</sub> ) according to EN ISO 11058:	ca. 70 l/(m <sup>2</sup> ·s)	(± 0.07 m/s)
Effective opening width (O <sub>90</sub> ) according to EN ISO 12956:	ca. 95 µm	
Dimensions:		
length:	ca. 100.00 m	width: ca. 2.00 m
		width: ca. 1.00 m
length:	ca. 10.00 m	width: ca. 2.00 m
		width: ca. 2.00 m

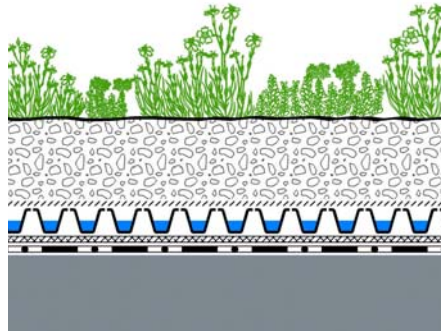
Order No. 2100  
Order No. 2102  
Order No. 2101

### Features

- resistant to mechanical stress
- various application possibilities
- resistant to all naturally occurring acids and alkali
- chemically and biologically neutral
- especially high passage of water
- quick and easy installation
- non-rotting

### Application Example

“Extensive Green Roof Type Rockery Type Plants according to ETA-13/0668”



Plant layer  
“Rockery Type Plants”

System Substrate  
“Rockery Type Plants”, ca. 80 l/m<sup>2</sup>

**Filter Sheet SF**  
Floradrain® FD 25-E  
Protection Mat SSM 45

Roof construction with root resistant waterproofing



### Specification Suggestion

Thermally strengthened sheet of polypropylene; weight ca. 100 g/m<sup>2</sup>, penetration force according to EN ISO 12236: ca. 1100 N, strength class 2, flow rate (H<sub>50</sub>) according to EN ISO 11058: ca. 70 l/(m<sup>2</sup>·s), effective opening width (O<sub>90</sub>) according to EN ISO

12956: ca. 95 µm, delivery and installation according to manufacturer’s instructions.

Make: ZinCo Filter Sheet SF  
Enquiries: ZinCo GmbH,  
Phone: +49 7022 6003-0

